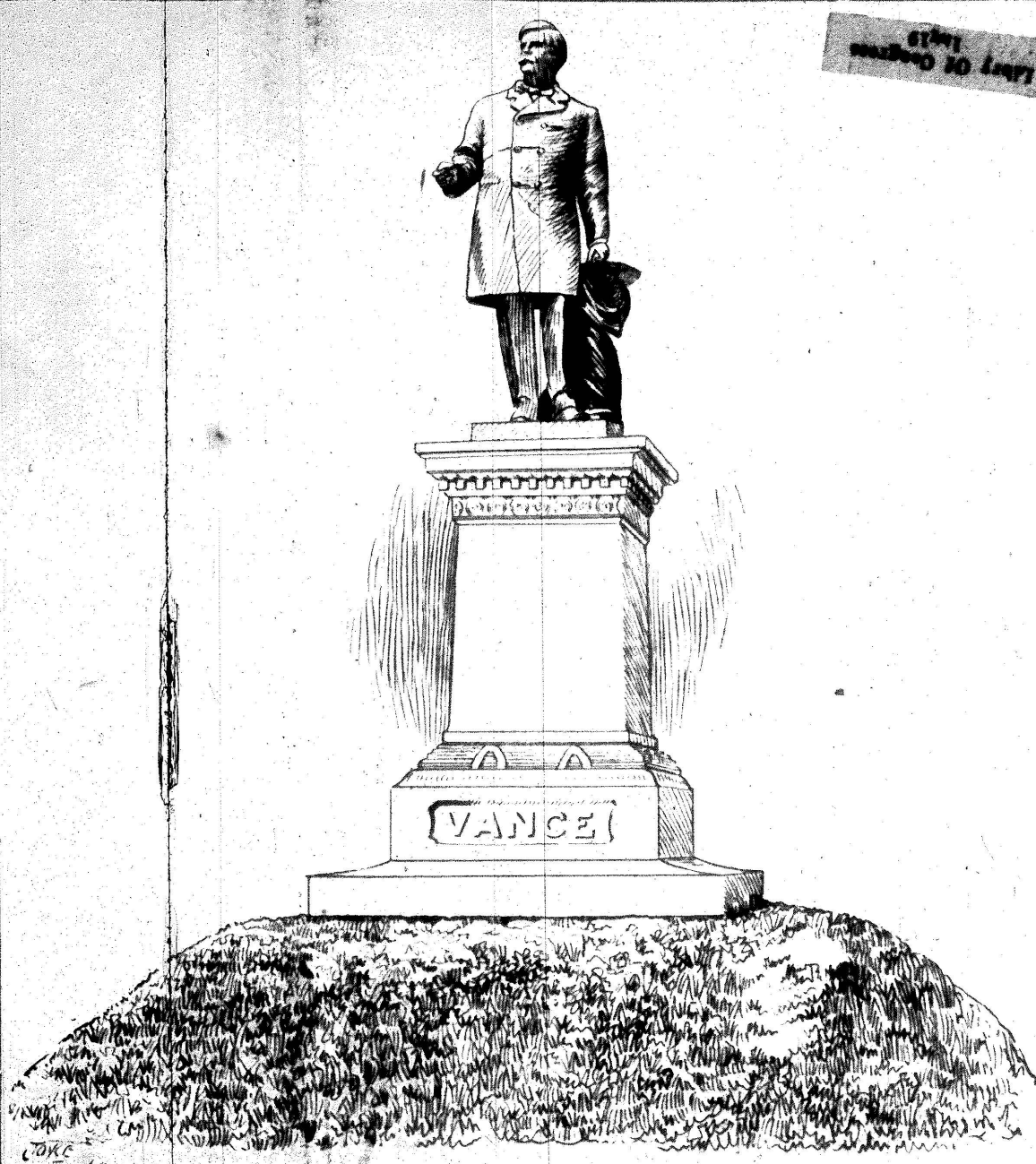


The Vance Monument

The News and Observer; August 22, 1900, 1



THE VANCE MONUMENT

**Erected to His Memory by the People of North Carolina, and Will
be Unveiled With Appropriate Ceremonies, This
Afternoon at 12:30 O'clock,**

The monument is situated on the eastern side of the Capitol grounds, about midway between the eastern portico of the Capitol, and the head of Newbern Avenue, which it faces. The first base is a large flat stone seven feet, two inches square, and is finely hammered. The entire pedestal is Mount Airy granite. The second base is five feet square and on it stands a die block, which is concave, finely cut and upon which is a cap, of fine granite, handsomely cut and moulded. Upon this stands the statue. This is eight and one half feet in height. All the statuary is of bronze cast at the foundry of the Gorham Manufacturing Company at Providence, Rhode Island. The modelling was done by Mr. H. J. Ellcott, of Washington, D. C., who also modelled the statue of General Hancock at Washington.

The entire monument is twenty-one feet high. The mound upon which it stands is four feet above the walk; the pedestal is eight and a half feet high, and the statue is eight and a half feet. The sides of the second base are cut with a bunch of letters tied with ribbon on top of the chamfer. VANCE in large raised letters is on the front panel of the first base. The mound upon which the monument rests has been nicely turfed over. The statue is one of the handsomest in the South.

The attitude of the figure is that of debate, the right hand clasping spectacles extended and the left hand resting upon a book at his side. The sculptor caught a pose that will forcibly bring back the figure of the dead Senator. The material throughout is the very finest, the granite being of finest quality and the bronze being of the United States standard grade.

The funds for the monument were of baggage and furnish information, stand of \$3,000. The News and Ob-